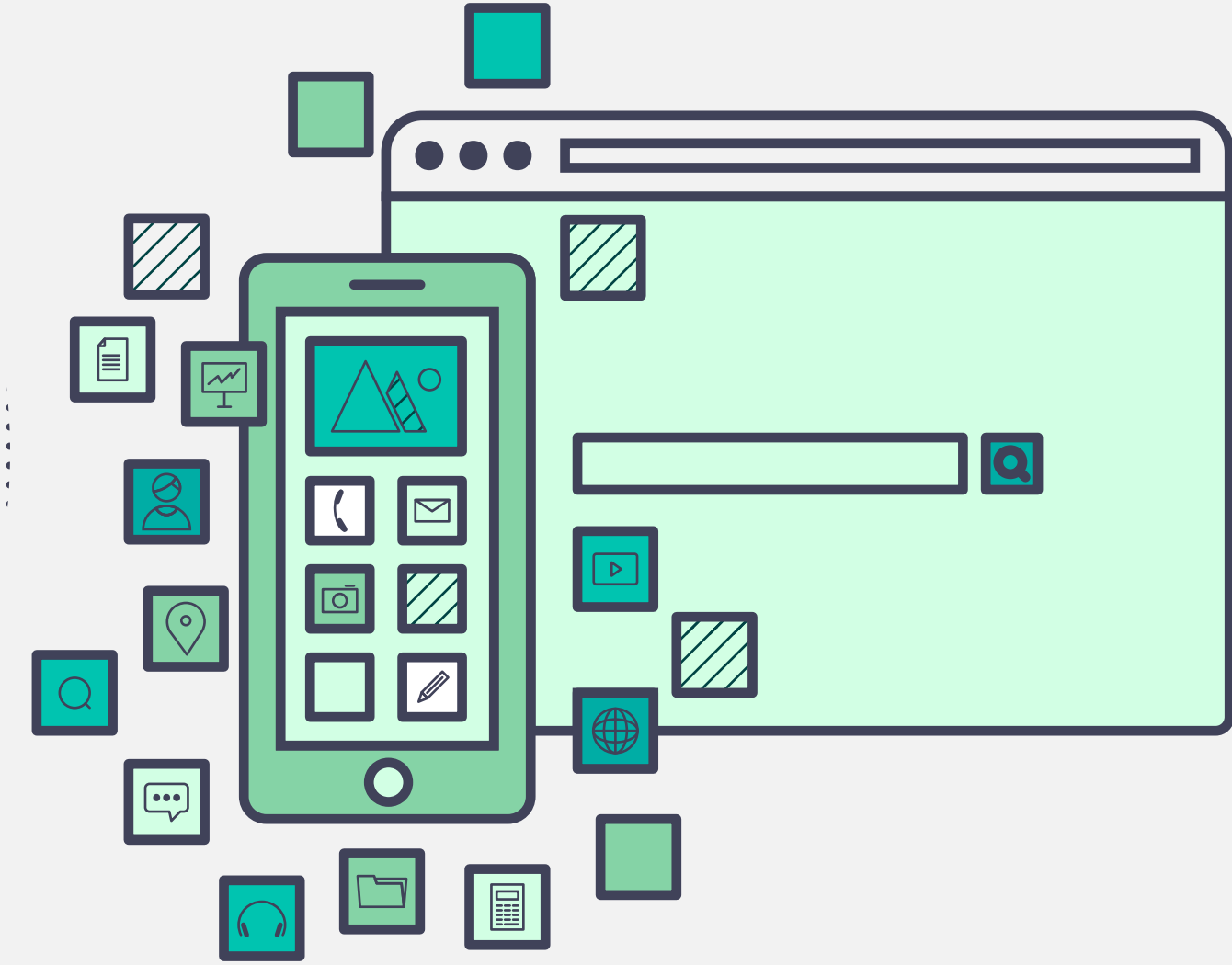


OLD STACK



- Infrastructure oriented
- IT focused
- Keeping the lights on
- Internal customers

NEW STACK



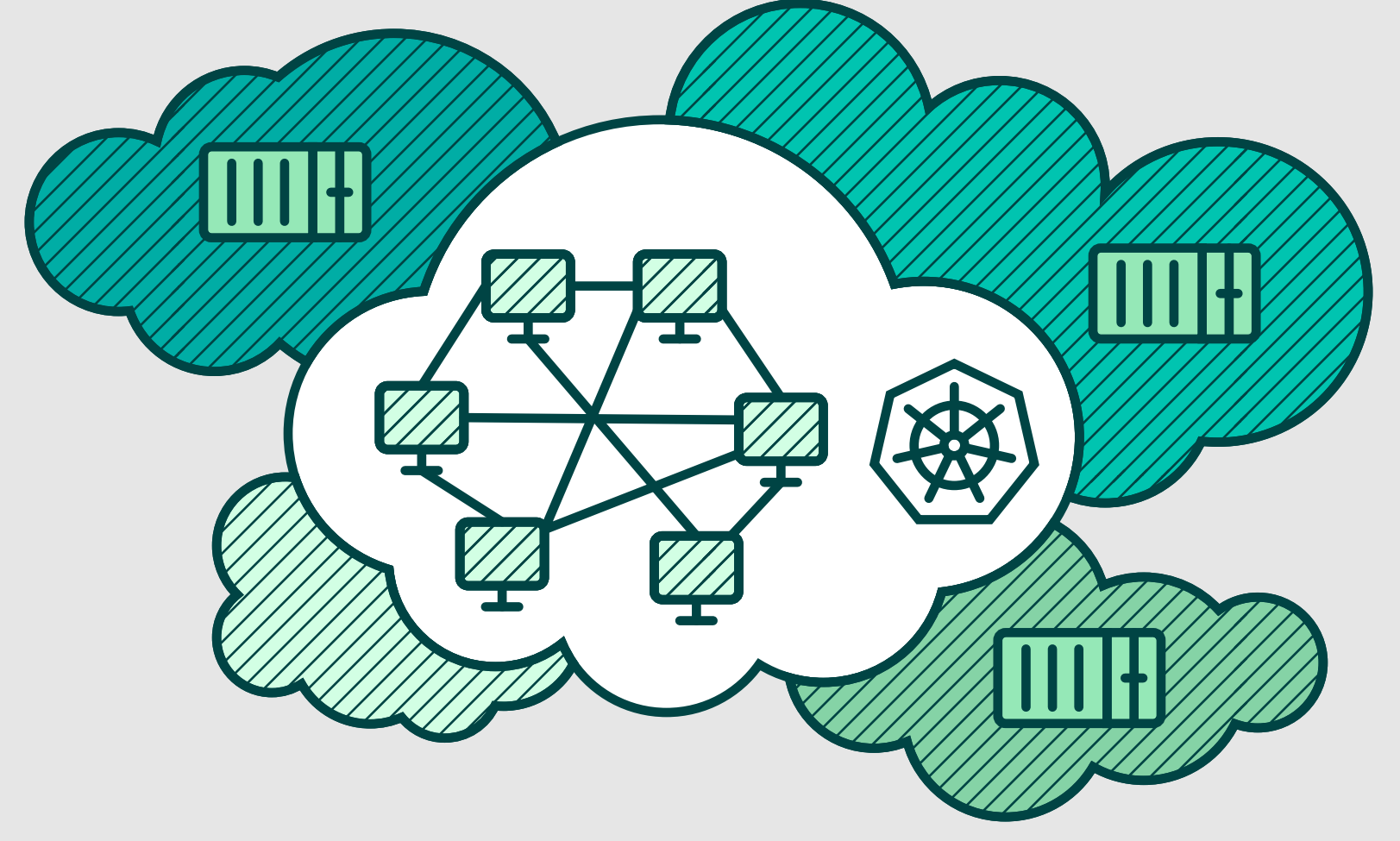
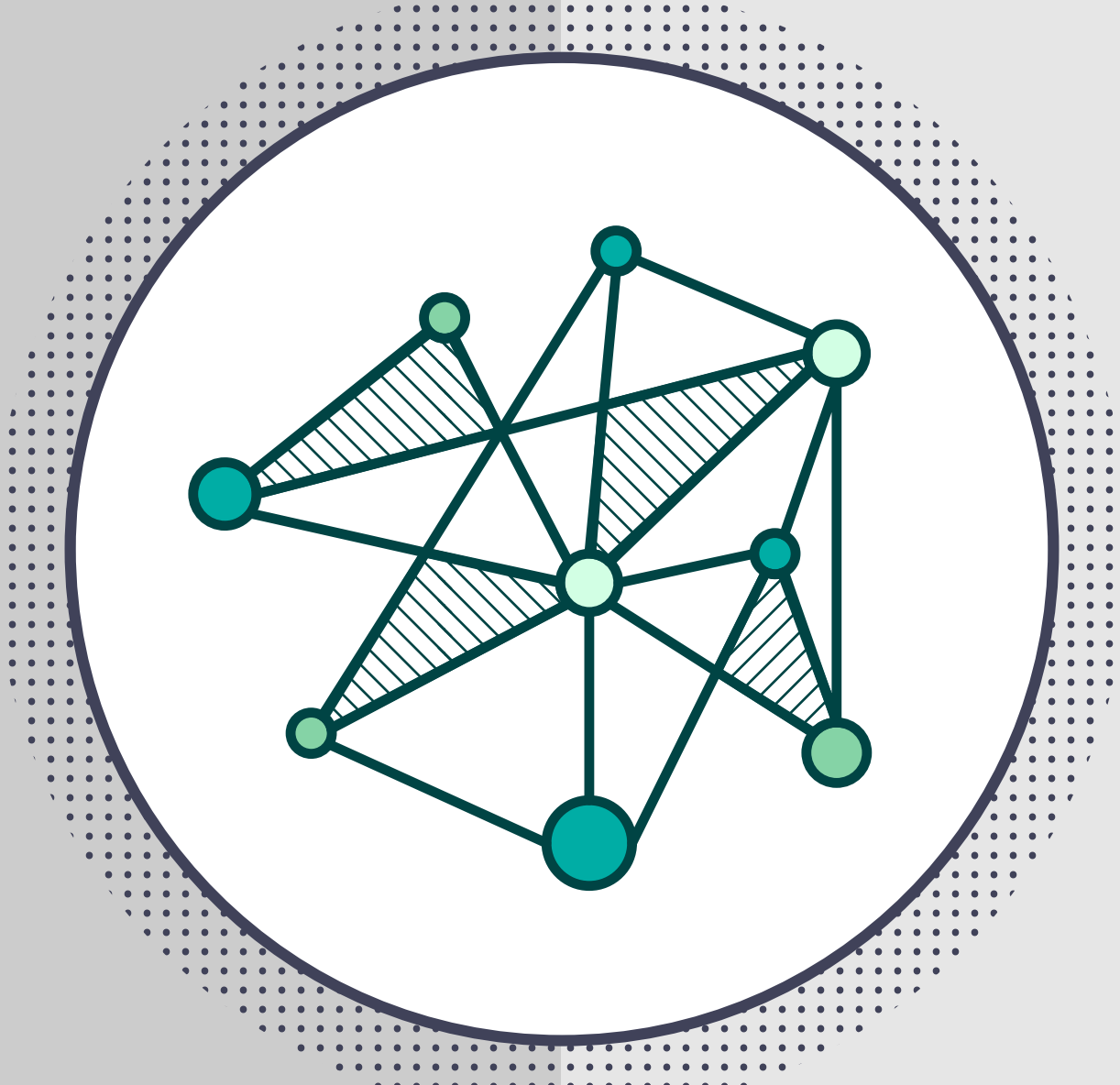
- Application oriented
- Developer focused
- Innovation, speed, growth
- External customers

BUSINESS FOCUS

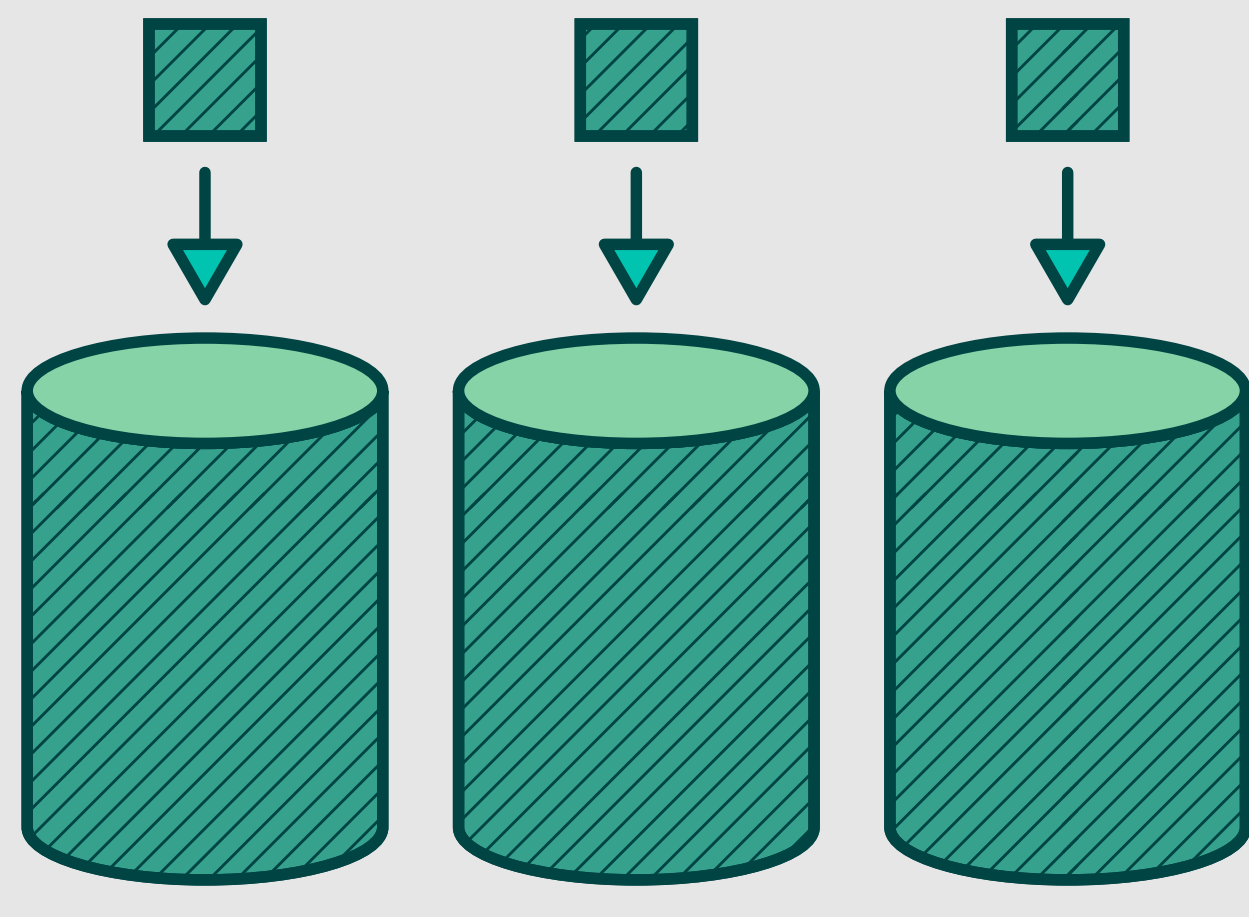
ARCHITECTURE & TECHNOLOGY



- Monolithic
- LAMP
- On-prem



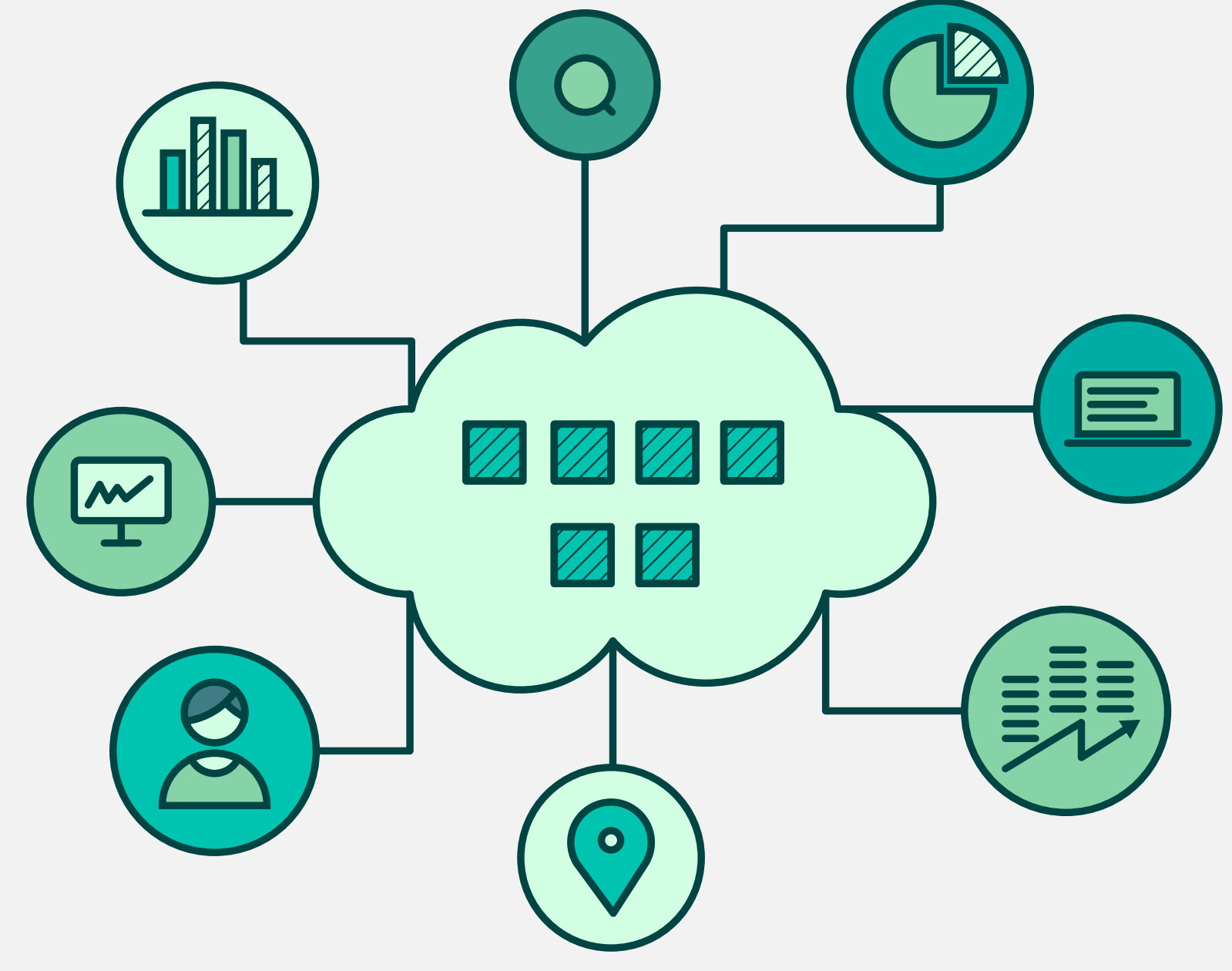
- Distributed
- Containers
- Microservices / Services
- Serverless
- Cloud / Multi-Cloud / SaaS



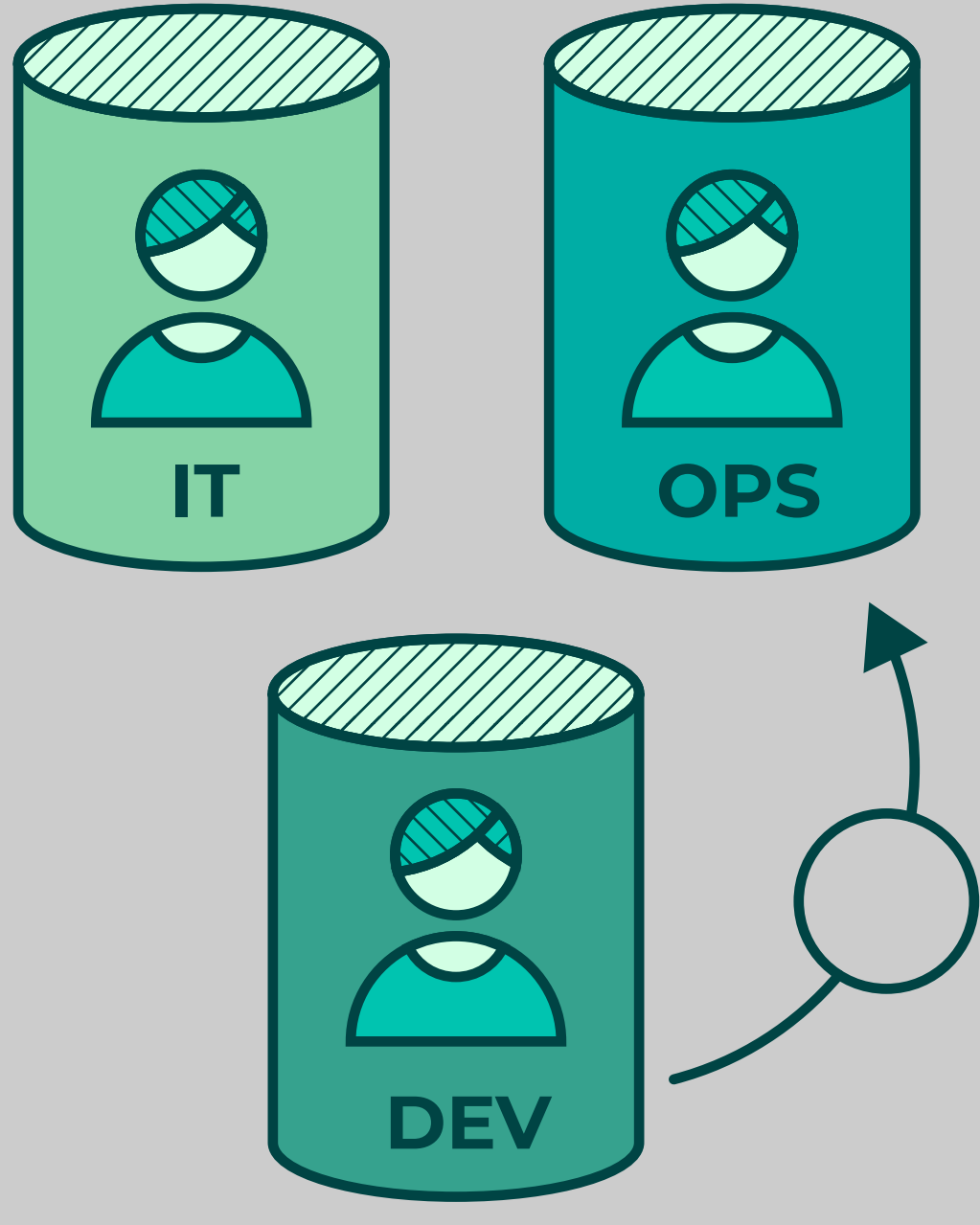
- Manageable volume of structured data - canned metrics, standard logs
- Fewer sources

011100101
110011010
001101101
111000101

DATA



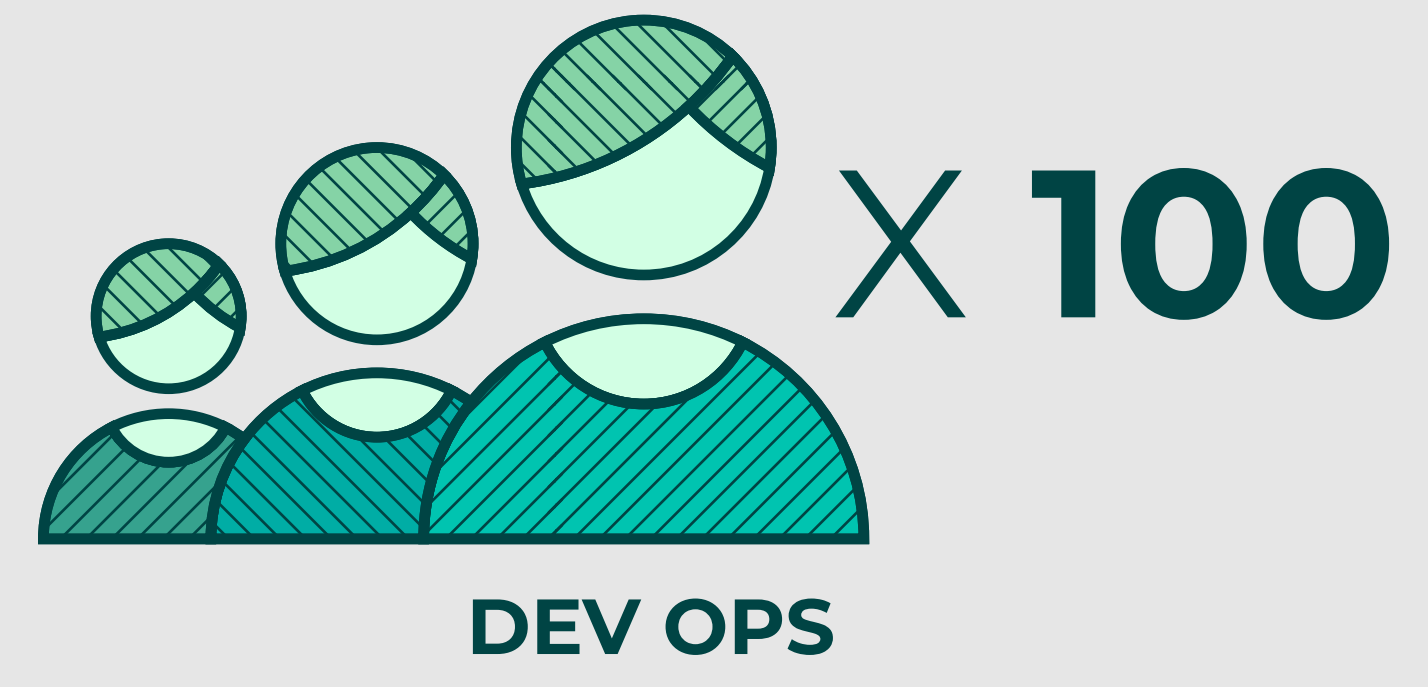
- Millions (Billions?) of events and transactions from dynamic / ephemeral infrastructure and distributed apps
- Wide variety and massive volume of high cardinality, highly dimensional, unstructured data & structured data



- centralized organizations w/siloed teams & "specialists"

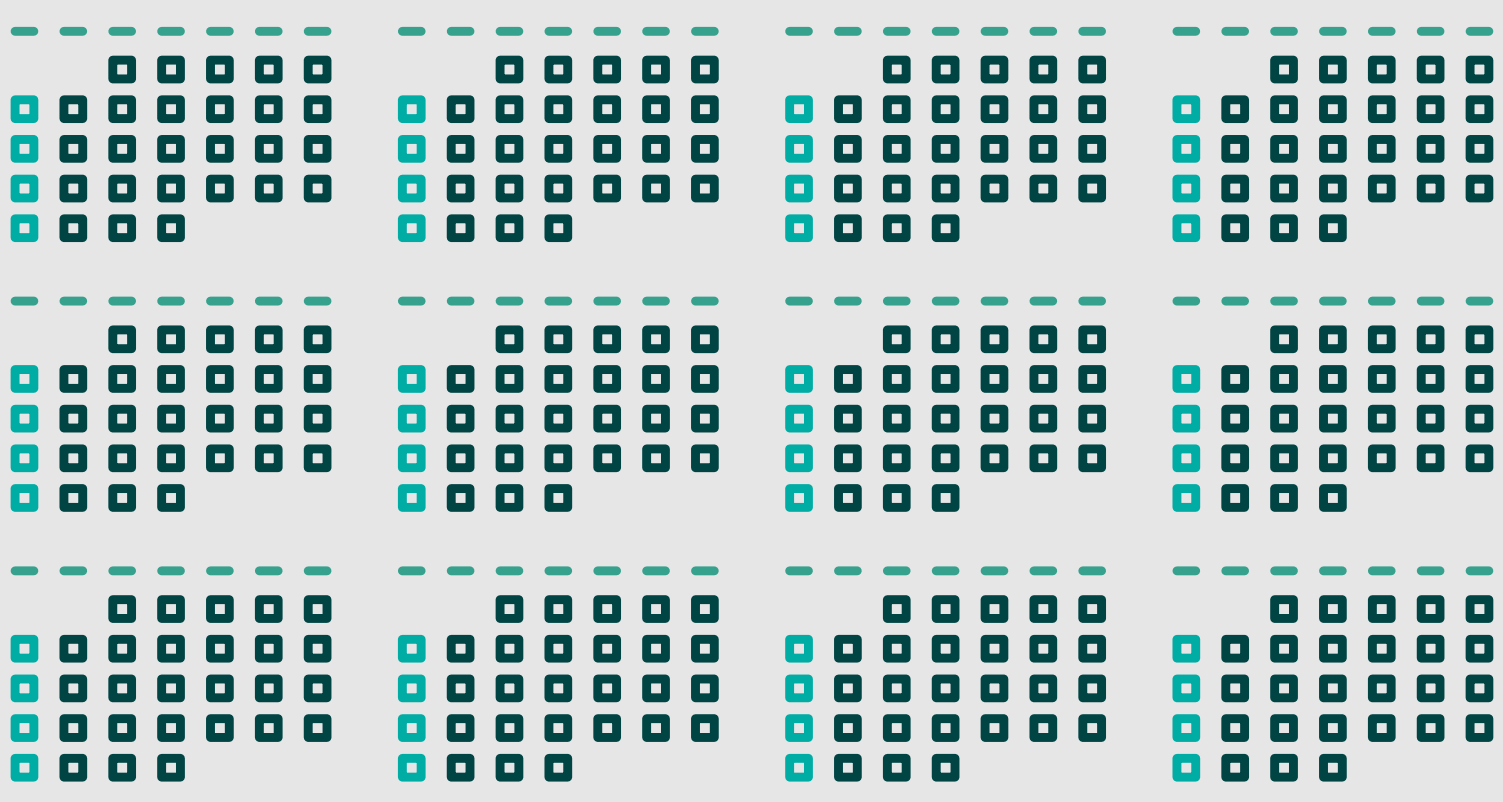


TEAMS

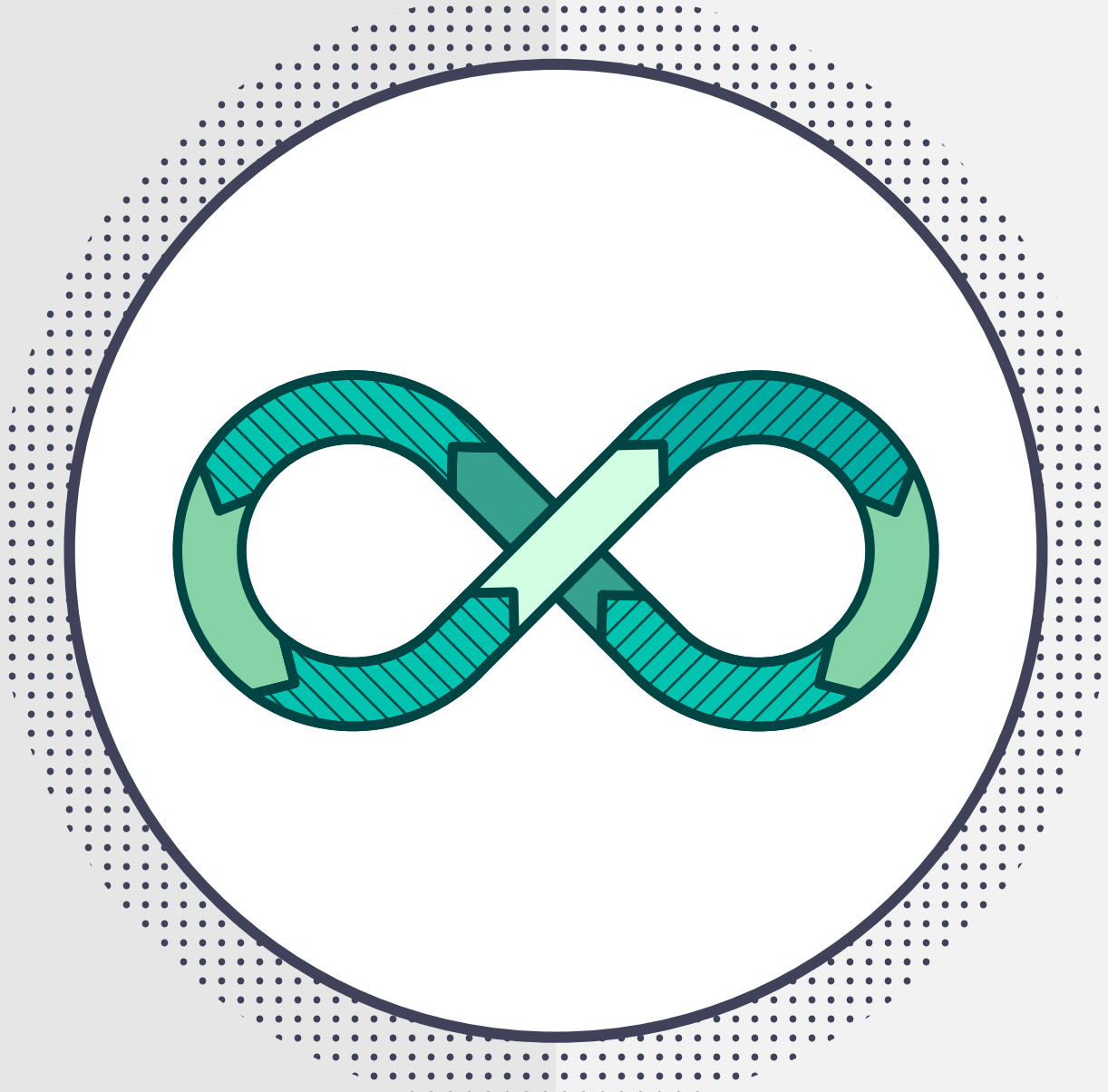


- Autonomous & decentralized
- Collaborative
- Own their own services

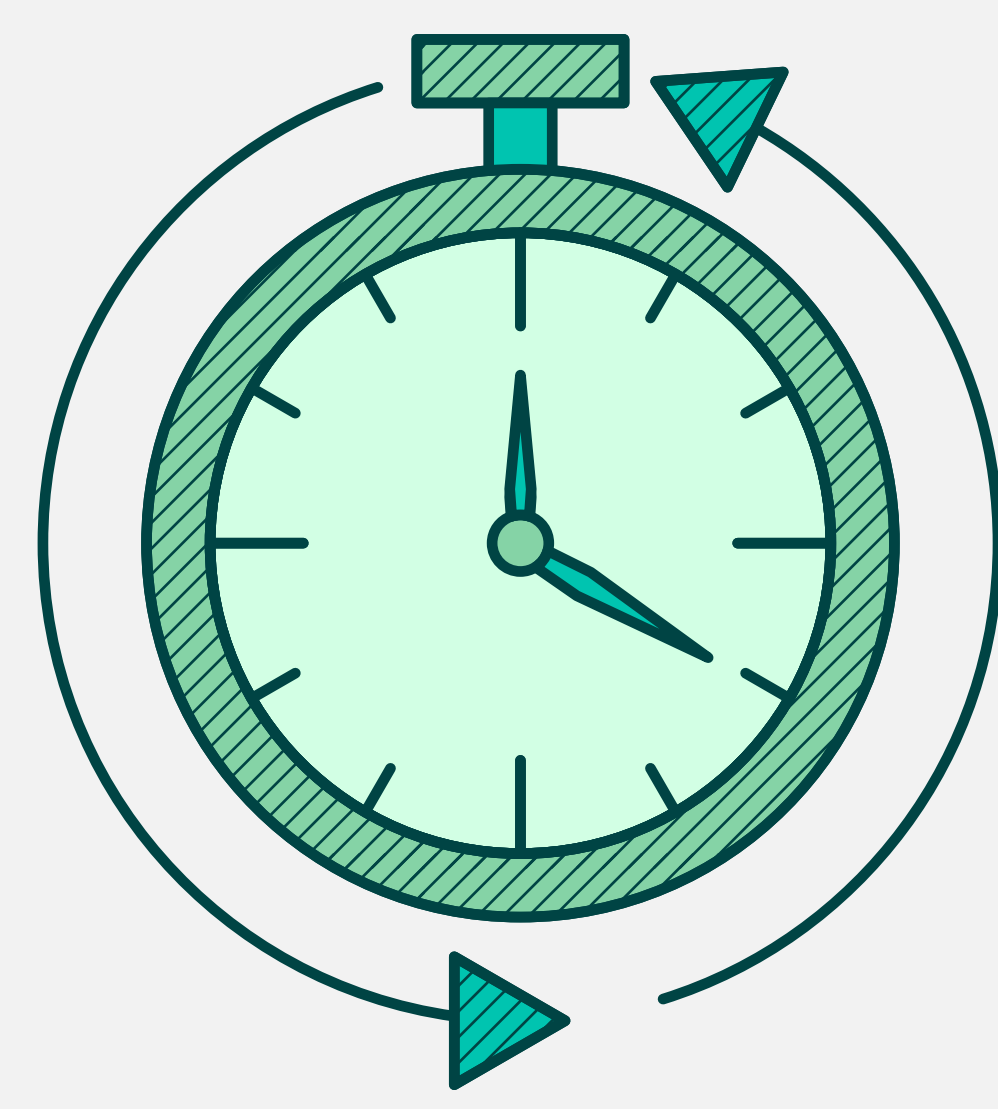
2019



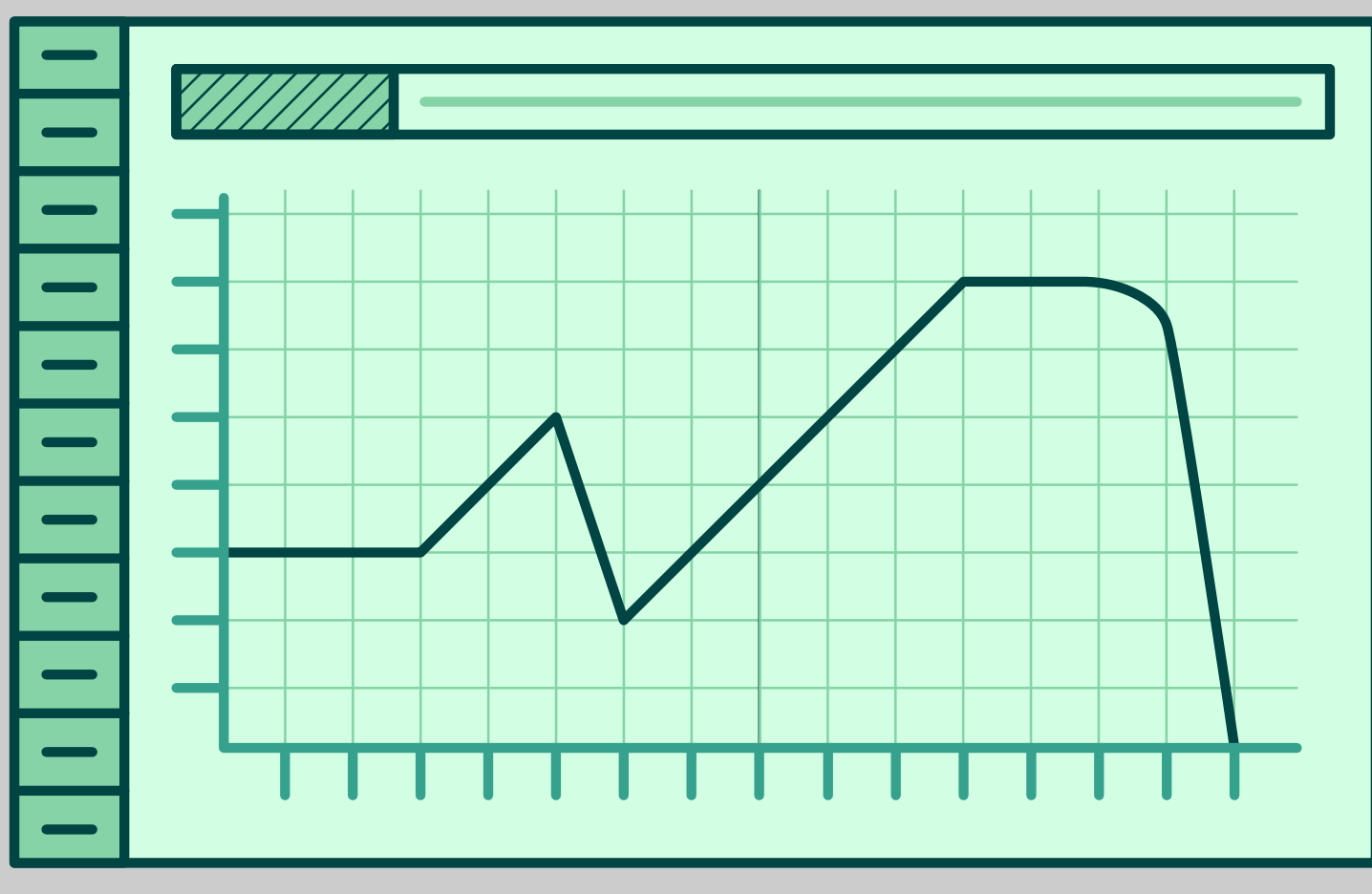
- Slow, week / months
- Manual
- QA in test environment



DEV CYCLES



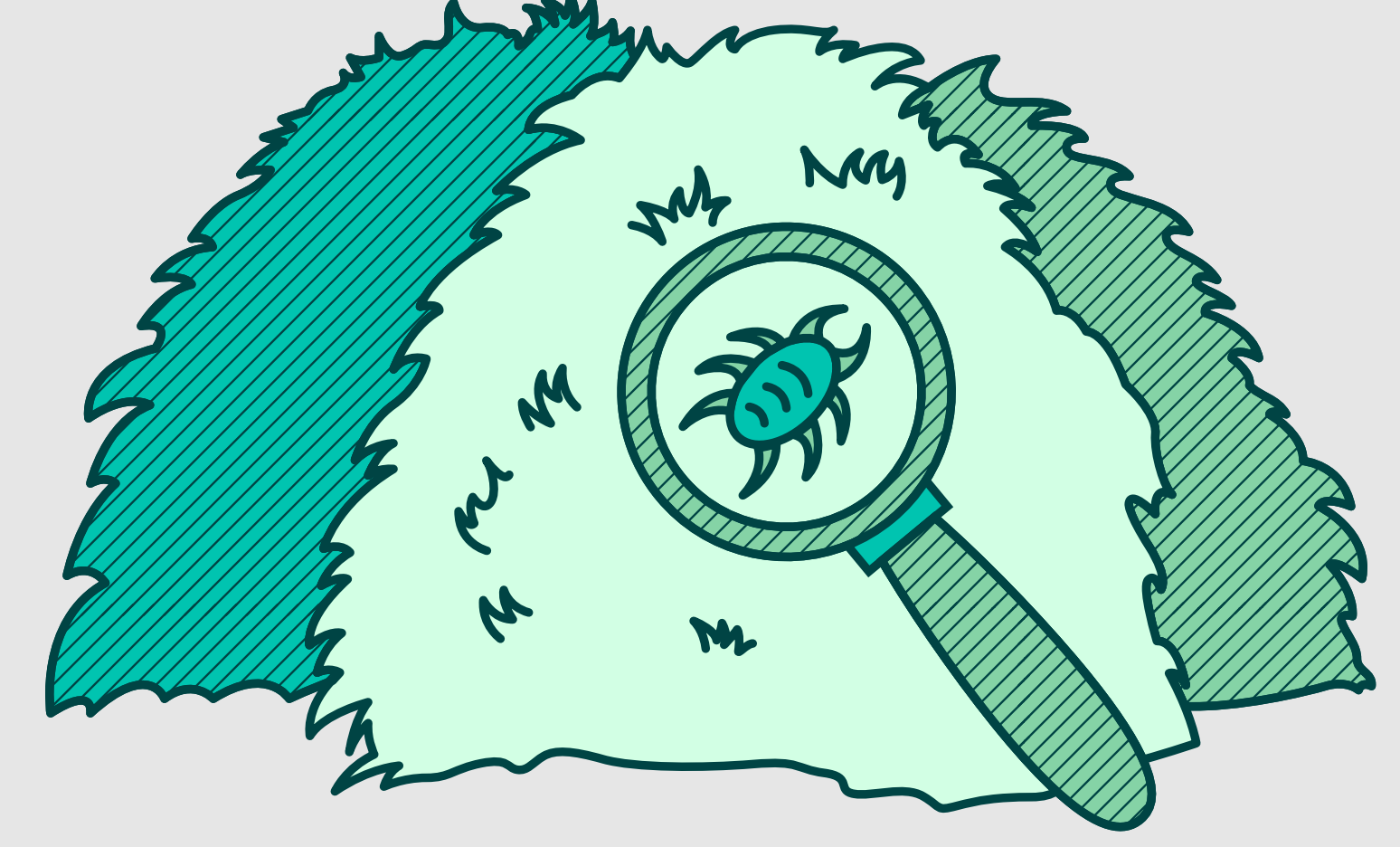
- Multiple times per hour
- Automated
- QA in production



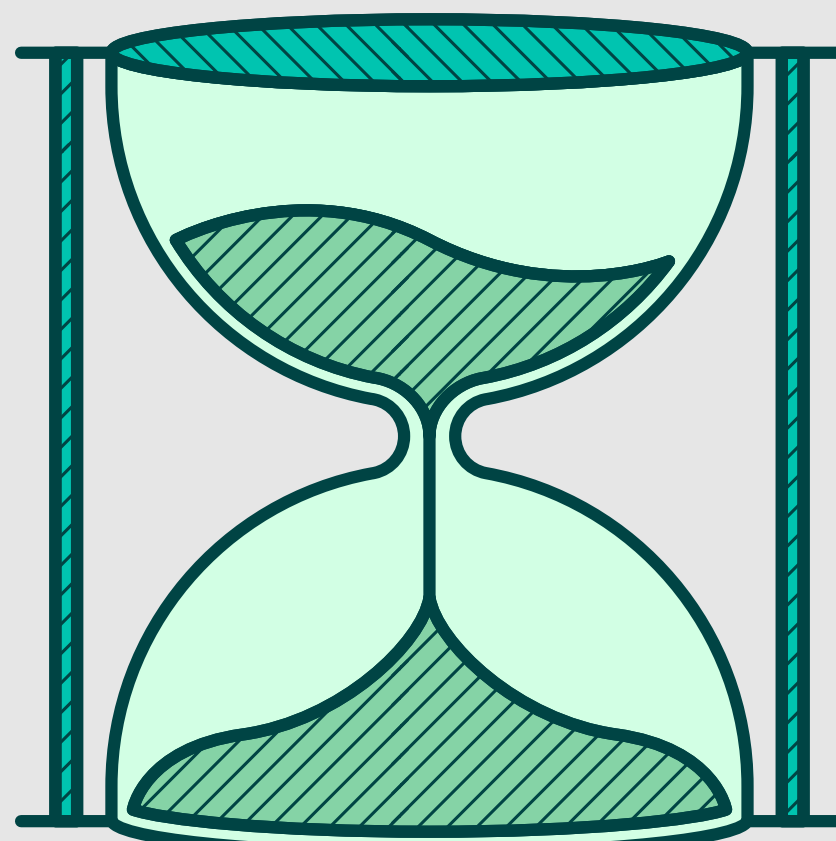
- Surface-level monitoring
- OOTB integrations with the "typical" vendors



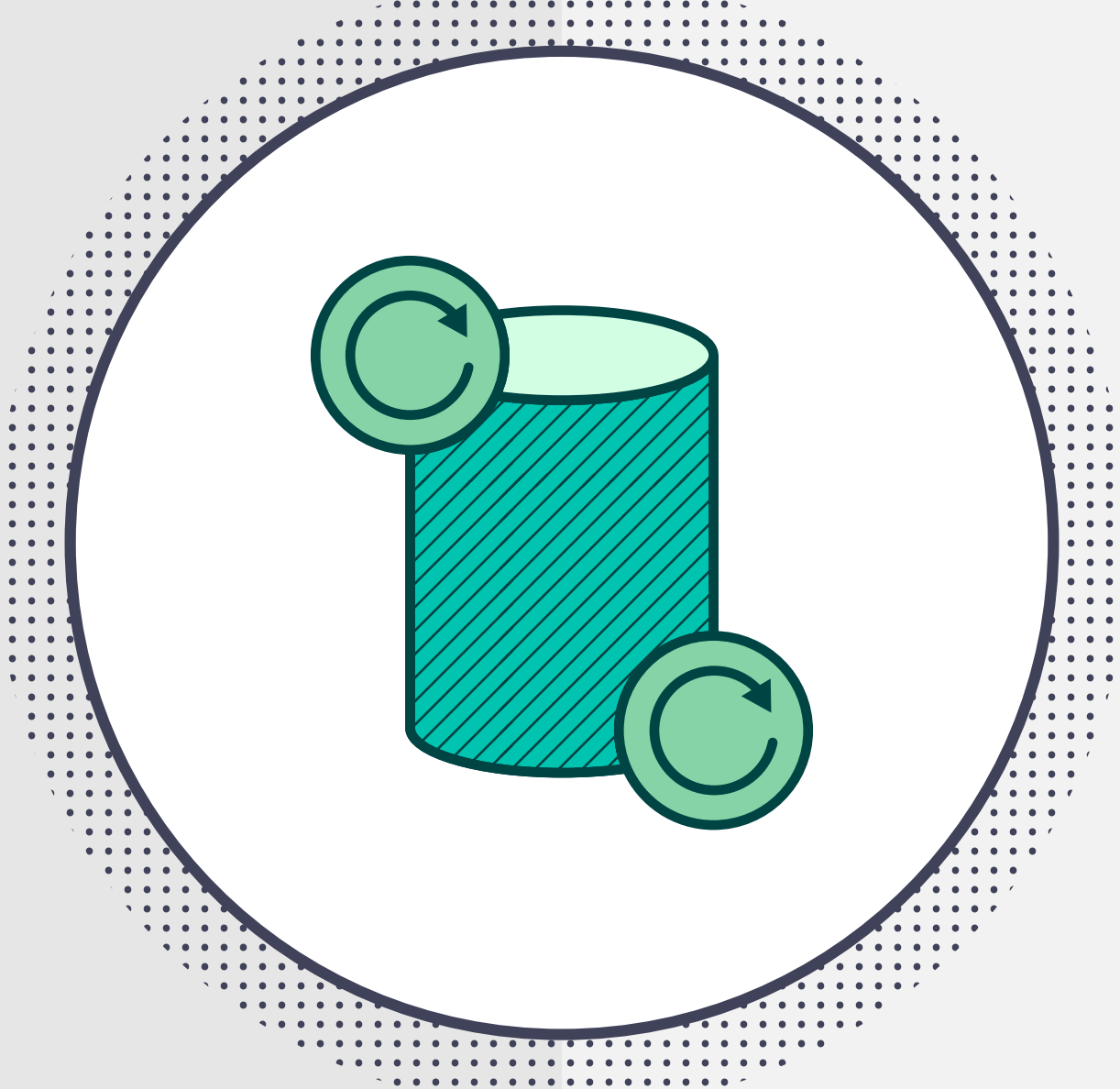
REQUIREMENTS



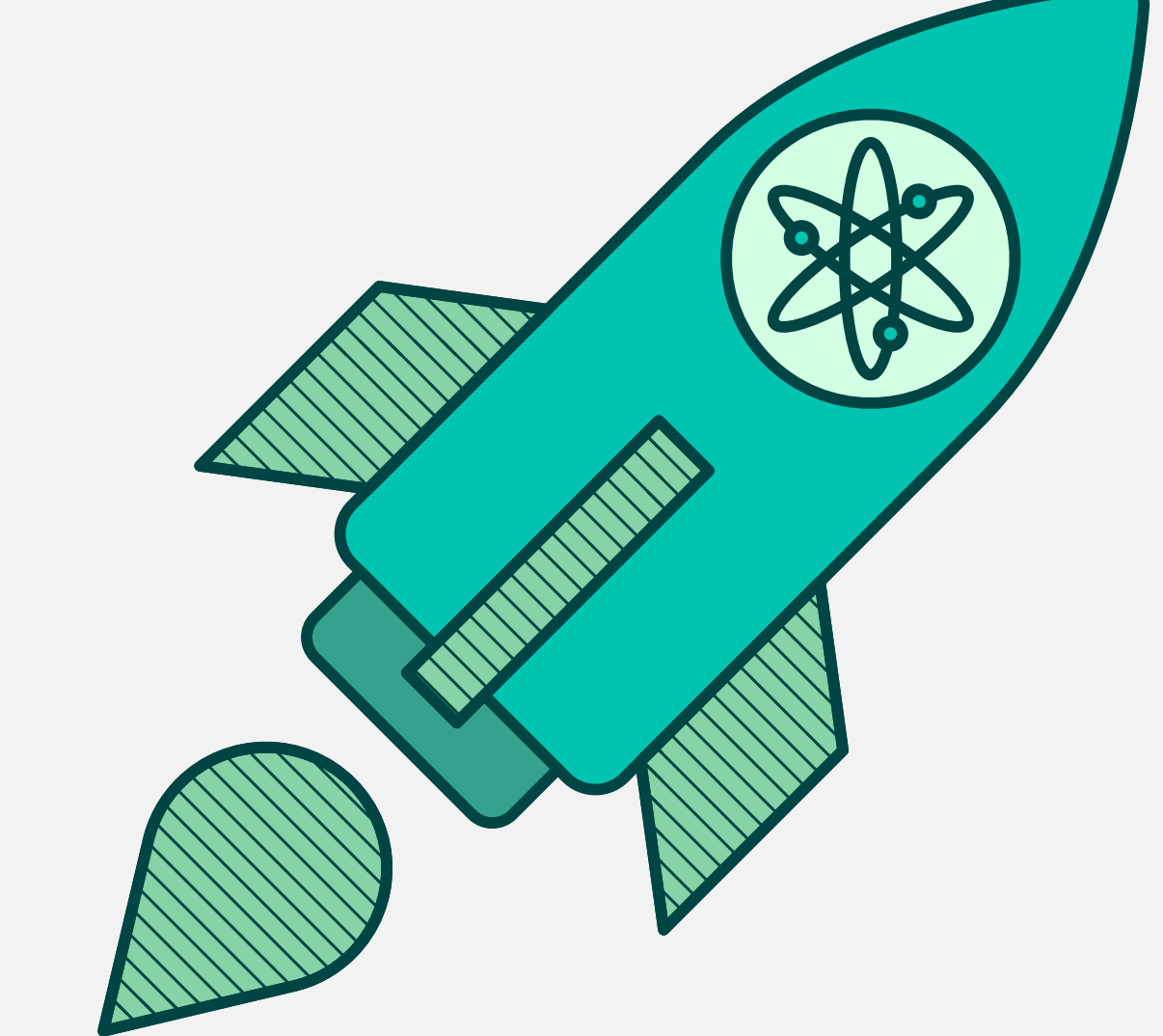
- Exploration, discovery and understanding
- Broad & deep operational answers
- Speed to truth
- Real-time performance, easy-of-use, massive scale



- Metrics-focused, dashboard-oriented, time series DB
- Reactive, first-gen APM
- Complex query languages, bulky keyword indexes



TOOLS



- Integrated, correlated and unified data (logs, traces, metrics and events) and signals (latency, traffic, errors and saturation) for full and rich context
- Alerts-to-answers, proactive AIOps
- Streamlined interactive exploration, realtime columnar data store